



# Application for Registration of Driving Colors or Driving Colors Change Pursuant to USTA Rule 17, Section 13

**\$115 Registration fee MUST accompany this application or \$58 registration change fee MUST accompany this application**

## Section 1

### PERSONAL INFORMATION

Member # \_\_\_\_\_ Date of Birth \_\_\_/\_\_\_/\_\_\_ E-mail address \_\_\_\_\_

Name: Last \_\_\_\_\_ First \_\_\_\_\_ Middle \_\_\_\_\_

Change of address (if necessary):  Permanent  Temporary From: \_\_\_/\_\_\_/\_\_\_ To: \_\_\_/\_\_\_/\_\_\_

Street address \_\_\_\_\_

City \_\_\_\_\_ State/Province \_\_\_\_\_ Zip/Postal code \_\_\_\_\_

Home Phone ( ) \_\_\_\_\_ Business phone ( ) \_\_\_\_\_ Mobile phone ( ) \_\_\_\_\_

Type of Current License \_\_\_\_\_

Date \_\_\_\_\_ Signature \_\_\_\_\_

One person cannot have two different designs registered, nor can one design be registered to two or more persons. You must obtain the approval of your design and color combination from this Association before having your jacket made. A complete description of your jacket must be given. The design must be drawn on this application or a drawing may be mailed or emailed WITH this application. The front and back of the jacket MUST be identical (except for pockets).

## Section 2

### COLOR SELECTION

**(We recommend that you consult your tailor for accurate colors.)**

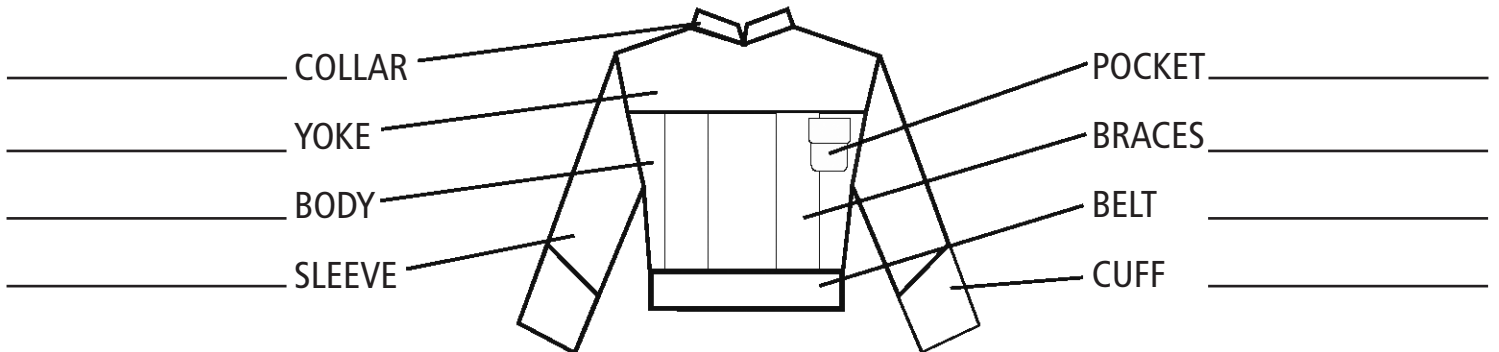
COLUMBIA BLUE	GREEN	TAN	WHITE	SCARLET RED	BRIGHT GOLD	LAVENDER
ROYAL BLUE	KELLY GREEN	LIGHT BROWN	GRAY	CARDINAL RED	OLD GOLD	PURPLE
NAVY BLUE	DARK GREEN	DARK BROWN	BLACK	MAROON	ORANGE	PINK

**CHOOSE A MAXIMUM THREE BASE COLORS AND ONE ADDITIONAL FOR TRIM/PIPING OR INITIAL.**

## Section 3

### COLOR DRAWING

**(Enter the colors requested as described on the front view picture.)**



## Section 4

### PAYMENT

Please do not send cash. **For U.S.:** Pay by check, money order or credit card in U.S. funds only. **Outside U.S.:** Payment is by credit card *only*.

Amount enclosed \$ \_\_\_\_\_ Signature \_\_\_\_\_

Check or money order enclosed  Please charge my VISA/MasterCard Expiration Date \_\_\_\_\_

Credit card number: 

--	--	--	--	--	--	--	--	--	--	--	--	--	--	--	--

 CVV Code 

--	--	--

**OVER!  
MORE  
INFORMATION  
NEEDED**



SASH \_\_\_\_\_ 3-inch diagonal band running from one shoulder to belt.  
(color)



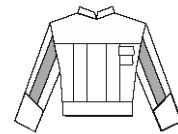
CROSS SASH \_\_\_\_\_ 3-inch diagonal bands running from shoulders to belt or hips,  
(color) crossing at center.



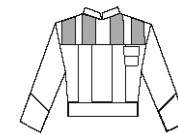
BRACES \_\_\_\_\_ 3-inch wide vertical band running from the bottom of the  
(color) yoke to the belt on both sides of jacket.



SLEEVE BANDS \_\_\_\_\_ 3-inch horizontal bands encircling each sleeve, between the  
(color) shoulder and elbow.



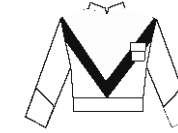
SLEEVE STRIPES \_\_\_\_\_ One but no more than two, 2-inch wide vertical stripes  
(color) running from the center of shoulder to the cuff of each sleeve.



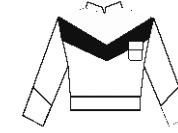
YOKE STRIPES \_\_\_\_\_ 2-inch vertical, diagonal, or horizontal stripes on yoke.  
(color)



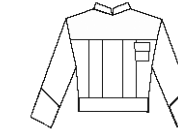
SOLID DEEP V \_\_\_\_\_ Solid V-shape design must run from shoulders to center of belt.  
(color)



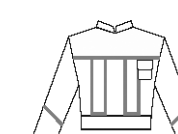
DEEP V STRIPE \_\_\_\_\_ 3-inch wide V-shaped stripe must run from shoulders to  
(color) center of belt.



V YOKE \_\_\_\_\_ 3-inch wide stripe must run from shoulders to center of chest.  
(color)



INITIALS (sleeve) \_\_\_\_\_ 6-inch in height must be placed centrally between shoulders  
(color) and elbow, on both sleeves. **Put initials here** \_\_\_\_\_



INITIALS(body) \_\_\_\_\_ 8-inch in height must be placed centrally on body of jacket.  
(color) **Put initials here** \_\_\_\_\_



GRAPHICS \_\_\_\_\_ Must be minimum of two inches from all points to center.  
(color)

PIPING \_\_\_\_\_ Should be placed on both sides of sash, braces, stripes, collar,  
(color) belt or cuffs.